

The S.C. Public Montessori Study
Montessori Student Demographics

The following analysis was conducted using the State of South Carolina’s PowerSchool database for the 2012-2013 academic year.

Enrollment by Race

- **58%** of S.C. public Montessori students are white, while **32%** are black. Hispanic students and students of other races make up **6%** and **4%** of all public Montessori students, respectively.
- When compared to non-Montessori students in the state, white students are overrepresented in Montessori programs, and minority students are underrepresented. White students make up **53%** of all non-Montessori students statewide, which is five percentage points lower than the Montessori estimate. For more detail, see **Chart 1** and **Table 1**.

Chart 1: Distribution of Race by Enrollment Percentage

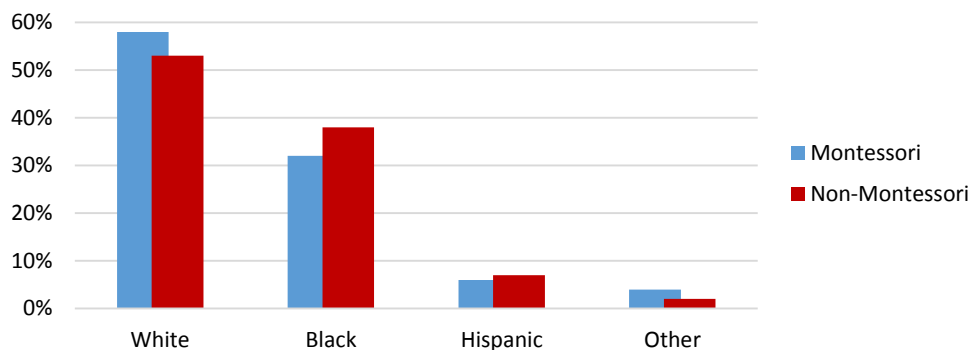


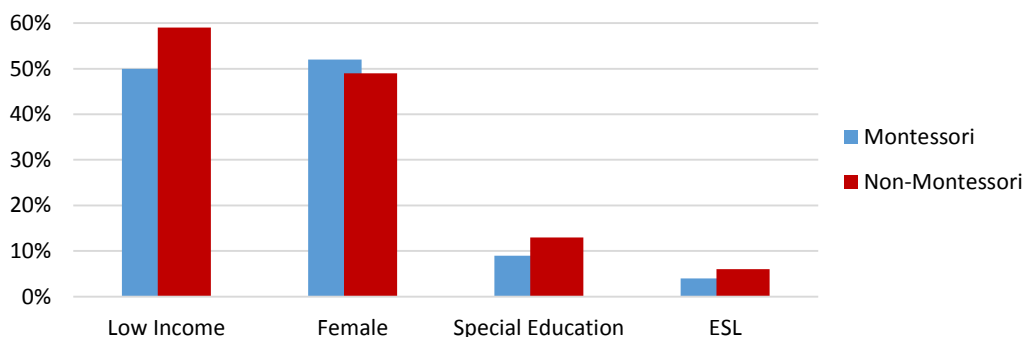
Table 1: Distribution of Race by Enrollment Number

	White	Black	Hispanic	Other	TOTAL
Montessori	3,688	2,029	353	282	6,352
Traditional	389,866	277,074	51,958	18,503	737,401

Enrollment by Income Level, Disability Status, ESL, and Gender

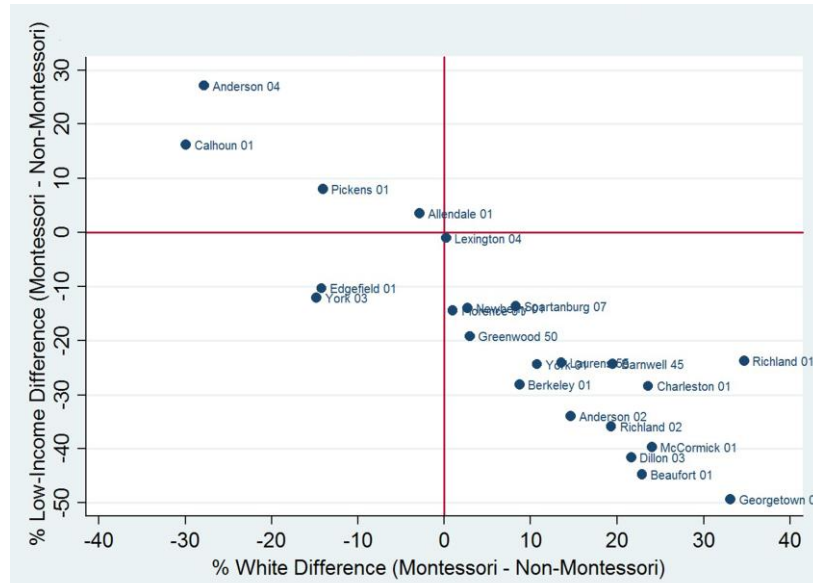
- While approximately **59%** of all non-Montessori students are low income, only **50%** of Montessori students are low income. In addition, Montessori students are less likely to be designated as special education or ESL students than are non-Montessori students. For a detailed comparison of Montessori and other public K-12 students in the state, see **Chart 2**.

Chart 2: Distribution by Income Level, Disability Status, ESL, and Gender



- The above analysis compares Montessori students to all other students in the state. However, this analysis is limited because there may be large demographic differences between districts that provide Montessori education and those that do not. See **Chart 3** for a comparison of the percentage of non-white and low income students participating in Montessori education and the percentage that are non-Montessori *within each school district*. The districts listed in the upper left quadrant are those in which Montessori students are generally more likely to be low-income and non-white than non-Montessori students within the same district. The majority of districts are in the lower right quadrant. Montessori students in these districts are more likely to be white and not low-income than non-Montessori students in the same district.

Chart 3: District Demographic Comparisons (Montessori vs. Non-Montessori)



Enrollment by Grade

- On average, the primary and lower elementary levels have the most public Montessori students; enrollment percentages tend to decrease in the upper grades.
- 25%** of S.C. public Montessori students are enrolled at the pre-Kindergarten level and **17%** at the Kindergarten level; enrollment in the middle school grades (6 through 8) account for only **7%** of the total S.C. public Montessori student enrollment. For more detail, see **Chart 4** and **Table 3**.

Chart 4: Grade Distribution by Enrollment Percentage

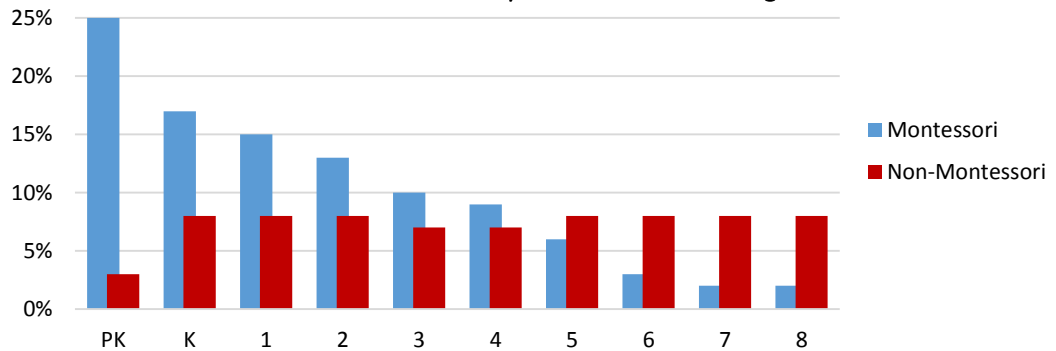


Table 3: Grade Distribution by Enrollment Number

	PK	K	1	2	3	4	5	6	7	8	TOTAL
Montessori	1,587	1,062	976	818	647	538	354	171	106	106	6,365
Non-Montessori	24,261	58,820	58,067	55,396	54,440	54,177	54,668	56,389	56,678	55,105	528,001